

CARTRIDGE

Cylinders



Find out our
key products



Solution for most applications



Easy and intuitive choice



Excellent value for money



Wide availability



Fast delivery



Features and certifications

Series of cartridge cylinders, available in bores from \varnothing 6 to 16, single acting, with threaded body allowing a further adjustment of the end stroke position. Seal kit not available. Supplied as standard in compliance with Reach and RoHS directives.

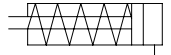


Type MCF \varnothing 6 ÷ 16

from page 1.55.20



Cartridge cylinders available in bores from \varnothing 6 to 16, single acting, with threaded body (allowing a further adjustment of the end stroke position) and threaded rod.



Type MCN \varnothing 6 ÷ 16

from page 1.55.20



Cartridge cylinders available in bores from \varnothing 6 to 16, single acting, with threaded body (allowing a further adjustment of the end stroke position) and non-threaded rod.



Options

Description	Symbol	Suffix
Special versions on request		/S

Code key

Bore	/	Stroke	Type	/	Special version
10	/	15	MCF	/	

Ø 6, 10, 16

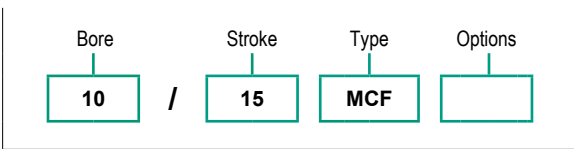
5, 10, 15 mm

MCF
Single acting
With threaded rod

MCN
Single acting
With non-threaded rod

S

How to order

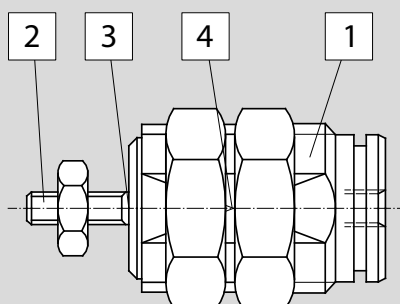


Notes

For further information on options and their matching, see tables above.

Standard materials

Type: **MCF, MCN**

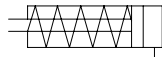


Position	Description	Materials
1	Body	Nickel-plated brass
2	Rod	Stainless Steel AISI 303
3	Seals	Polyurethane (PU)
4	Spring	Stainless Steel AISI 302

Main features

6 ÷ 16

Bores Ø



Single acting
With threaded rod

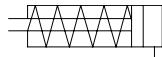
MCF

Type



6 ÷ 16

Bores Ø



Single acting
With non-threaded rod

MCN

Type



Technical data

Bore Ø mm	6	10	16	
Fluid	Filtered compressed air with or without lubrication. Lubrication, if started, must be continued.			
Pressure range	2 ÷ 7 bar			
Temperature range	-20°C ÷ +80°C			
Strokes	5 ÷ 15 mm			
Port	M5			
Thrust force (Nm) at 6 bar	14	42	109	
Maximum side load (N)	0,10	0,15	0,20	
Traction force (N)	Stroke 5	1,4	3,9	9,9
	Stroke 10	2	3,4	8,7
	Stroke 15	1,5	2,9	7,4

Standard strokes

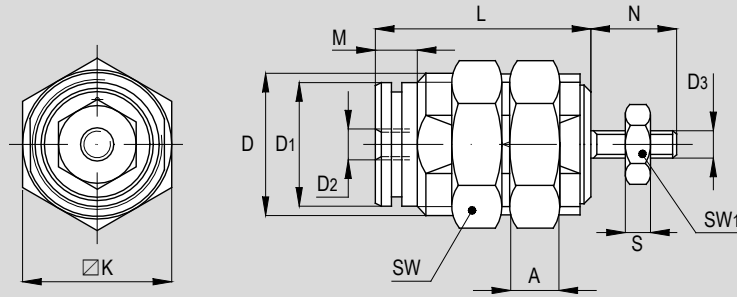
Stroke mm	MCF Bore Ø mm		
	6	10	16
5			
10			
15			

Stroke mm	MCN Bore Ø mm		
	6	10	16
5			
10			
15			

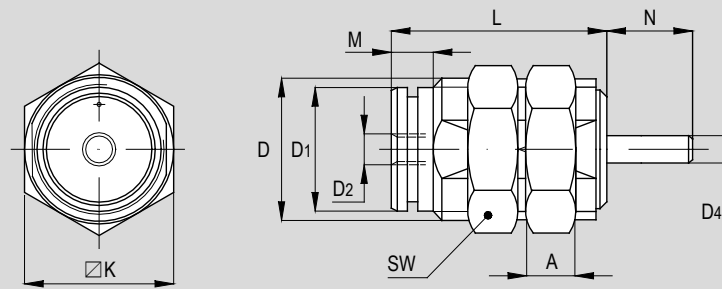
Key
 Standard stroke

Standard dimensions

Type: **MCF**



Type: **MCN**



\varnothing (mm)	D	D1	D2	D3	D4	$\square K$	M	L			N	A	S	SW	SW1
								Stroke 5	Stroke 10	Stroke 15					
6	M10x1	8,5	M5	M3	3	9	5	19,5	26,5	33,5	8	3	2,4	14	5,5
10	M15x1,5	12	M5	M4	4	19	7	23	29,5	36,5	10,5	4	2	19	7
16	M22x1,5	19	M5	M5	5	20	6	27	32	37	13	5	4	27	8